

# Smartverter PowerHub

**Libra**<sup>®</sup>  
E N E R G Y  
BALANCE IN POWER

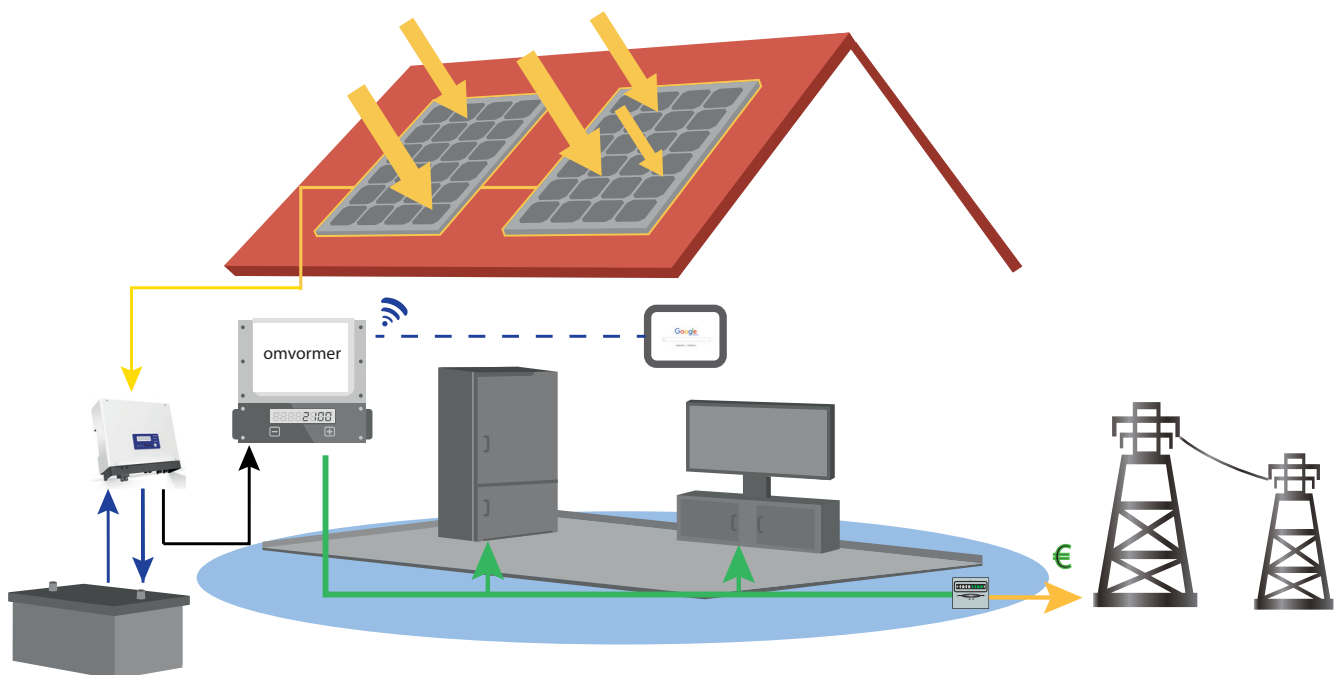
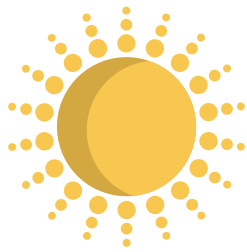
Upgrade your existing PV system simply by adding Power Storage with a home battery. The Libra SmartverterPowerHub is compatible with any type of grid connected inverter.



- Will operate with any type grid connected inverter
- Expand your PV system with Power Storage
- The best solution to offset ever decreasing feed-in tariffs
- Using our App see real time Data of your system

*Upgrade your PV system!*

# How does the SmartverterPowerHub works?



1. Connect the PowerHub to your existing grid connected inverter
2. Power will flow from PowerHub to the inverter
3. Then it will flow from the inverter to power household appliances
4. Additional capacity will be stored in the battery
5. When the battery is fully charged the excess PV power will be transferred to grid

## Benefits:

- During the night you will use your own energy which is stored in the battery
- With our App you are able to program the system yourself

## Compatible with:



### LG Chem

This lithium LG Chem battery is compact and small in size. It has a maximal capacity of 6.4kW. With a cycle life of more than 6,000 cycle, the LG Chem has a lifetime of 20 years. With a DoD of 90% the LG Chem is very efficient. Possibility to expand: up to two 3.2kWh expansion modules can be added to a standard capacity of 6.4kWh, which allows to store more energy.



The Pylon battery has a maximum capacity of 2.4kW. With a cycle life of more than 4,000 cycle, the Pylon battery has a lifetime of 10 years. The DoD of 80% makes the battery less efficient than the LG Chem 6.4kW.

<b>PV INPUT</b>	SV6000-PH
Max. PV input power	6000 W
Max. PV input voltage	600 V
Max. PV input current	25 A
No. Of PV input & output connectors	1/1
PV connector	MC4
<b>BATTERY</b>	
Battery Type	Lead-acid or Li-Ion
Nominal Voltage	48 V
Max. Discharge/Charge current	50 A / 50 A
Max. Discharge/Charge power	2500 W / 2500 W
Battery capacity	>=2,4 kWh (depending requirement)
Charging curve	3-stage adaptive with maintenance
Over current protection	Integrated
<b>POWERHUB OUTPUT AND INPUT DATA</b>	
Rated output voltage while discharging	360 V DC (range 250-360 V DC)
Rated output current while discharging	6,5 A DC
PV voltage range while charging battery	150-500 V DC
Max. input current while charging	10 A DC
<b>EFFICIENCY</b>	
Max. efficiëntie opladen accu	96.0%
Max. efficiëntie ontladen accu	96.5%
<b>CERTIFICATION</b>	
Safety/EMC	CE
<b>GENERAL DATA</b>	
Dimensions (WxHxD)	344 x 274.5 x 128 mm
Weight	8 kg
Mounting	Wall bracket
Ambient temperature range	-25-60°C (>45°C derating)
Relative humidity	0-95%
Max. operating altitude	4000m (>3000m derating)
IP protection degree	IP65
Topology	High frequency insulation
Standby losses	<8 W
Cooling	Natural convection
Noise level	<25 dB
Display	LCD / LED light / App
Communication	USB2.0 / WiFi / RS485
Standard warranty	5 years